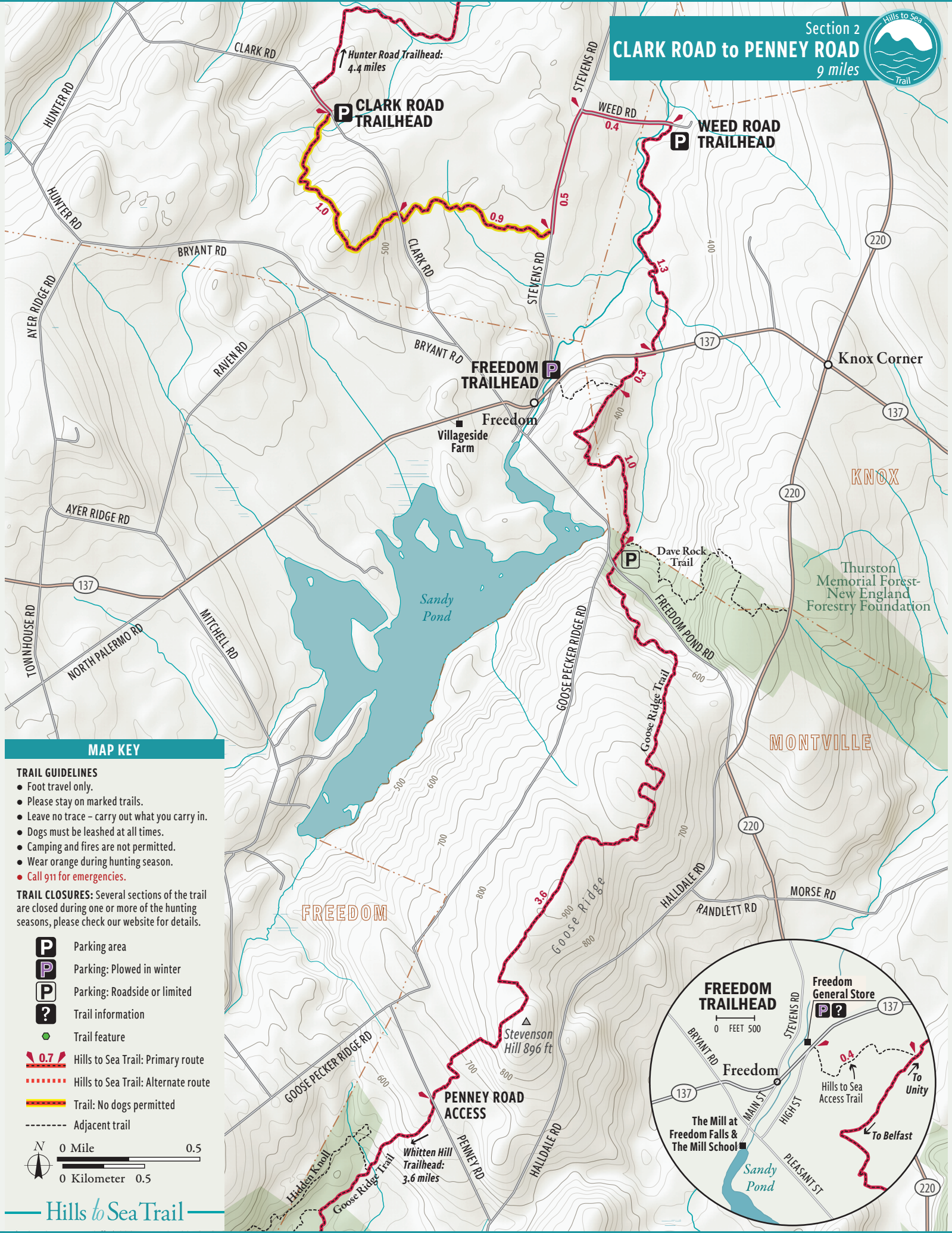


Section 2  
**CLARK ROAD to PENNEY ROAD**  
 9 miles



**MAP KEY**

- TRAIL GUIDELINES**
- Foot travel only.
  - Please stay on marked trails.
  - Leave no trace - carry out what you carry in.
  - Dogs must be leashed at all times.
  - Camping and fires are not permitted.
  - Wear orange during hunting season.
  - Call 911 for emergencies.

**TRAIL CLOSURES:** Several sections of the trail are closed during one or more of the hunting seasons, please check our website for details.

- P** Parking area
- P** Parking: Plowed in winter
- P** Parking: Roadside or limited
- ?** Trail information
- Trail feature
- 0.7** Hills to Sea Trail: Primary route
- 0.7** Hills to Sea Trail: Alternate route
- 0.7** Trail: No dogs permitted
- Adjacent trail

